



Prüfbericht - Nr.: 0114030352b2 001		Seite 1 von 5	
<i>Test Report No.:</i>		<i>Page 1 of 5</i>	
Auftraggeber: <i>Client:</i>	Chi Mei Corporation 59-1, San Chia, Jen Te, Tainan City 71702, Taiwan, R.O.C.		
Gegenstand der Prüfung: <i>Test Item:</i>	ACRYLONITRILE-BUTADIENE-STYRENE COPOLYMER		
Bezeichnung: <i>Identification:</i>	POLYLAC® PA-747 / Nature		
Anlieferungszustand: <i>Delivery condition:</i>	apparent good	Eingangsdatum: <i>Date of Receipt:</i>	2014-12-16
Prüfart: <i>Testing location:</i>	TÜV Rheinland (Shanghai) Co., Ltd.		
Prüfgrundlage: <i>Test specification:</i>	According to RoHS (recast): Restriction of the Use of Certain Hazardous Substances in Electrical and Electronic Equipment, 2011/65/EU: Total Content of Lead, Cadmium, Mercury, Chromium VI, Polybrominated Biphenyls, Polybrominated Diphenyl Ethers		
Prüfergebnis: <i>Test result:</i>	According to the kind and extend of tests performed the above mentioned test item passed the test specification.		
geprüft/ tested by:		kontrolliert/ checked by:	
			
2015-01-05 Anne Chen /Coordinator		2015-01-05 Carl Chang /Department Manager	
Datum <i>Date</i>	Name/Stellung <i>Name/Position</i>	Unterschrift <i>Signature</i>	Datum <i>Date</i>
Sonstiges/ Other Aspects:			
Test period: 2014-12-16 – 2015-01-05			
Abkürzungen:		Abbreviations:	
ok / P = entspricht Prüfgrundlage		ok / P = passed	
fail / F = entspricht nicht Prüfgrundlage		fail / F = failed	
n.a. / N = nicht anwendbar		n.a. / N = not applicable	
Dieser Prüfbericht bezieht sich nur auf das o.g. Prüfmuster und darf ohne Genehmigung der Prüfstelle nicht auszugsweise vervielfältigt werden. Dieser Bericht berechtigt nicht zur Verwendung eines Prüfzeichens. <i>This test report relates to the a. m. test sample. Without permission of the test center this test report is not permitted to be duplicated in extracts. This test report does not entitle to carry any safety mark on this or similar products.</i>			



Test Report No. : 0114030352b2 001
 Customer : Chi Mei Corporation
 Test Method : Cd, Pb, Hg – determination with reference to IEC62321: 2013
 Cr VI, PBB/PBDE – determination with reference to IEC62321: 2008

2015-01-05

Sample Material Lab.-No.		MDL	POLYLAC® PA-747 plastic / off-white TCL141216-13
Cadmium (Cd)	mg/kg	2	n.d.
Lead (Pb)	mg/kg	2	n.d.
Mercury (Hg)	mg/kg	2	n.d.
Chromium VI (Cr VI)	mg/kg	2	n.d.
Sum of Polybrominated biphenyls (PBBs)	mg/kg	-	n.d.
Monobromobiphenyl	mg/kg	5	n.d.
Dibromobiphenyl	mg/kg	5	n.d.
Tribromobiphenyl	mg/kg	5	n.d.
Tetrabromobiphenyl	mg/kg	5	n.d.
Pentabromobiphenyl	mg/kg	5	n.d.
Hexabromobiphenyl	mg/kg	5	n.d.
Heptabromobiphenyl	mg/kg	5	n.d.
Octabromobiphenyl	mg/kg	5	n.d.
Nonabromobiphenyl	mg/kg	5	n.d.
Decabromobiphenyl	mg/kg	5	n.d.
Sum of Polybrominated diphenyl ethers (PBDEs)	mg/kg	-	n.d.
Monobromodiphenyl ether	mg/kg	5	n.d.
Dibromodiphenyl ether	mg/kg	5	n.d.
Tribromodiphenyl ether	mg/kg	5	n.d.
Tetrabromodiphenyl ether	mg/kg	5	n.d.
Pentabromodiphenyl ether	mg/kg	5	n.d.
Hexabromodiphenyl ether	mg/kg	5	n.d.
Heptabromodiphenyl ether	mg/kg	5	n.d.
Octabromodiphenyl ether	mg/kg	5	n.d.
Nonabromodiphenyl ether	mg/kg	5	n.d.
Decabromodiphenyl ether	mg/kg	5	n.d.

Notes:

- n.d. - not detected
- n.a. - not applicable
- MDL - Method of Detection Limit
- mg/kg is equal to ppm (parts per million)

	Cd	Cr(VI)	Pb	Hg	PBBs	PBDEs
Maximum permissible Limit acc. to 2011/65/EU (mg/kg)	100	1000	1000	1000	1000	1000



Test Report No. : 0114030352b2 001
Customer : Chi Mei Corporation

2015-01-05

Test Sample

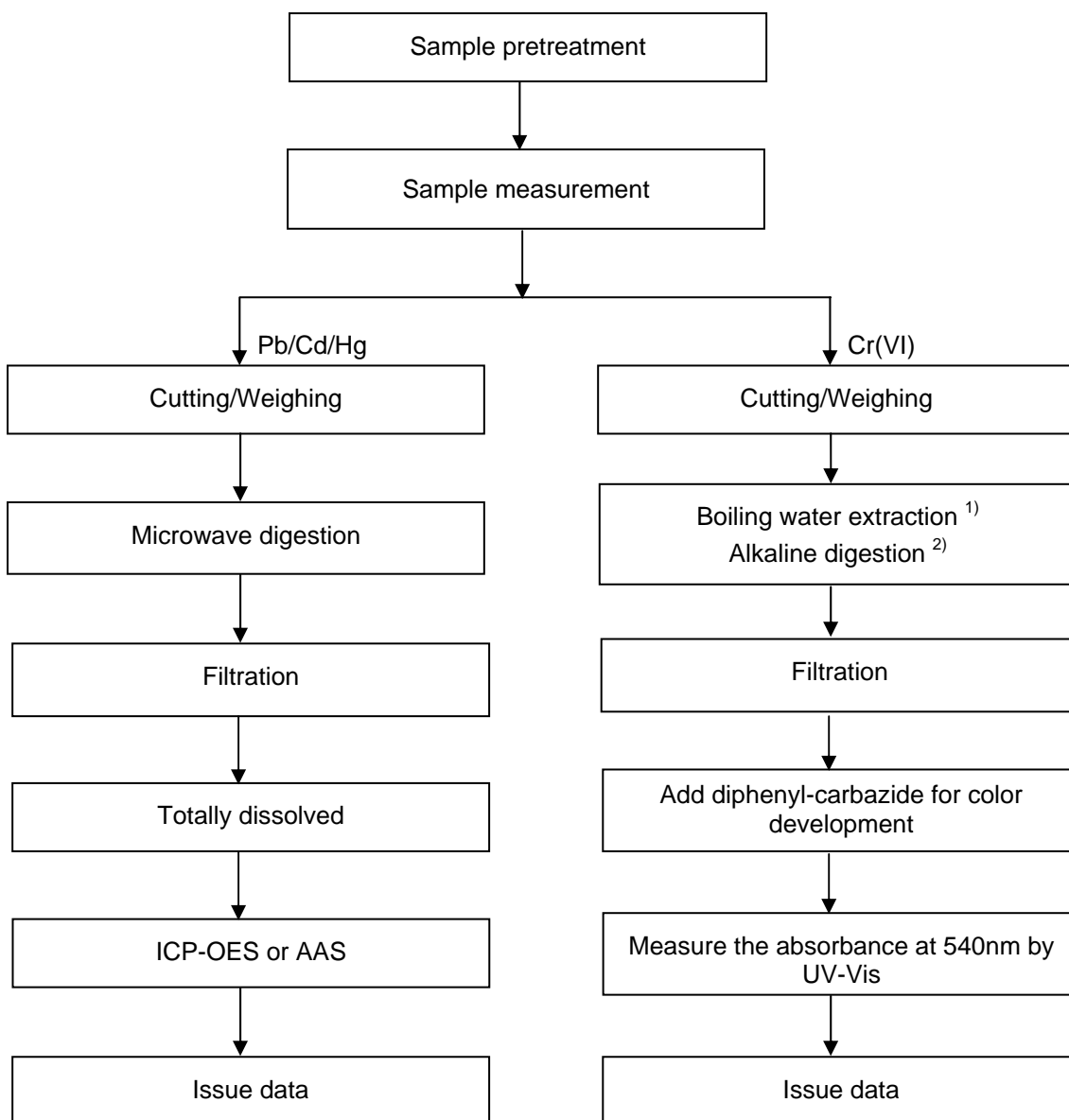


Test Report No. : 0114030352b2 001
Customer : Chi Mei Corporation

2015-01-05

Testing procedure:

RoHS (Pb, Cd, Hg, Cr(VI))



Notes: ¹⁾ For metallic material
²⁾ For non-metallic material

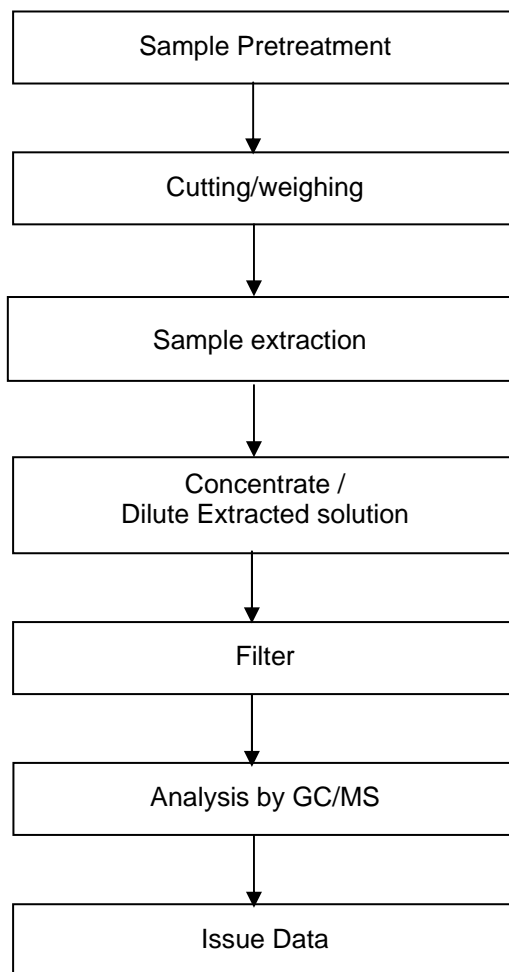


Test Report No. : 0114030352b2 001
Customer : Chi Mei Corporation

2015-01-05

Testing procedure:

RoHS (PBBs/PBDEs)



--- End of Test-Report ---

